

GO-GLOBAL: THE FAST, SIMPLE AND AFFORDABLE SOLUTION TO ACCESS EDA TOOLS IN A DISTRIBUTED ENVIRONMENT.



GraphOn's GO-Global® family lets design engineers and CAD professionals access graphics-intensive design tools such as Cadence from any location and platform. That's why companies around the world – including Xilinx, AMD, Marvell, Quantum, LSI Corp. (formerly Agere), 3Com, and Renesas Technology – all rely on GO-Global for easy remote access to EDA applications.

GO-Global for UNIX

GO-Global for UNIX is the thin-client, server-centric solution that extends the reach of UNIX applications to any device or platform without requiring a client-side X server. It lets enterprises Web-enable complex, feature-rich applications easily and cost-effectively for access over LANs, WANs, dial-up connections, or the Internet.

GO-Global for Windows

GO-Global for Windows is the thin-client, server-centric solution that extends the reach of 32-bit Windows applications to any device or platform without requiring Microsoft Windows Terminal Services and Citrix. It lets enterprises Web-enable complex, feature-rich applications easily and cost-effectively for access over LANs, WANs, dial-up connections, or the Internet.

Platform Consolidation

GO-Global is perfectly suited to facilitate the current trend towards client platform consolidation:

- **Existing Model:** Two workstations per CAD professional are typically used, one running UNIX for EDA tools, the other running Windows for productivity apps, e-mail, etc.
- **New Model:** Move the EDA software to UNIX servers, provide the CAD professional with one workstation running Windows, and use GO-Global for UNIX to quickly and efficiently access the designs.

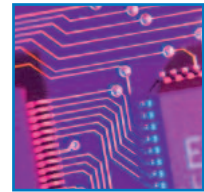
Xilinx Finds the Perfect Solution

Xilinx, Inc. is a worldwide leader in programmable logic and system solutions – and a satisfied customer of both GraphOn and Cadence.

“Our company is comprised of several offices and we need to be able to have any user at any site be able to run applications like Cadence on multiple machines at multiple sites,” said Xilinx IT Manager Jeff Goldman. “We need to be able to disconnect from active sessions and then reconnect at a later

time. Initially, we were using TightVNC to accomplish this, but the results were far from excellent.”

Xilinx had to set up complicated Quality of Service (QoS) schemes on their routers to get results that were still not very good. “The problem was that the performance was terrible,” Goldman continued. “TightVNC ran very slowly and used a significant amount of bandwidth. So we started looking for a better solution and ran into GO-Global. GO-Global runs significantly faster and doesn't use nearly as much bandwidth. It also doesn't require QoS on our routers, and we can even optimize GO-Global's performance for Cadence. Also, because it uses less bandwidth, users can even run from home – where they generally have a cable modem or a small DSL line – and the performance is acceptable.”



GO-Global Benefits at a Glance

- Server-resident, thin-client architecture for centralized management and security of both data and licensing.
- Provides application access from any client platform – Windows, UNIX, Linux, or Mac.
- Ideal solution for mobile or disconnected EDA professional wanting to use host-based designs from the office, home, hotel room, or any remote location.
- Excellent solution for Cadence and other EDA software users needing to modify back-end designs when on-site collaborating with their own customer.
- Perfect alternative to VNC and native X-Windows freeware technologies.
- Distributed model for remote CAD access with unrivaled speed over WAN, cable modem, DSL, or dial-up.
- Patented Rapid-X Protocol (RXP) is much faster and offers much better data compression than any other remote X option on the market.
- Near LAN-like response times, even over bandwidth-constrained or high-latency lines.
- 256-bit AES encryption of all application traffic.
- True server-based, thin-client computing model taking advantage of the processing horsepower at the server and saving client desktop resources.
- Ideal Web-enabling solution for accessing and running Cadence or other tools from a Web browser.



Access to Applications Anywhere.

© 2007 GraphOn Corporation. All rights reserved. GraphOn, the GO logo, and GO-Global are trademarks or registered trademarks of GraphOn Corp. All other trademarks belong to their respective owners.