

GO-Global Cloud 4.1

QUICK START

SETTING UP A WINDOWS CLOUD SERVER AND HOST

This guide provides instructions for setting up a cloud server and configuring a host so it can be accessed from the cloud server. For alternative configurations, and for more information, see the *Cloud Server Administrator Guide*.

1 INSTALL THE CLOUD SERVER

The cloud server is supported on the x86 and x64 versions of Windows Server 2003 (Standard Edition and Enterprise Edition) and Windows Server 2008 (Standard Edition and Enterprise Edition).

The cloud server setup program installs the cloud server application, Apache Tomcat, Java Runtime Environment, and PostgreSQL.

To install the cloud server

1. Sign on as an administrator (i.e., an account that is a member of the Administrators group) to the console of the computer on which you plan to install GO-Global Cloud Server.
2. Run the cloud server setup program (gg-cloud-server.windows_x86.exe or gg-cloud-server.windows_x64.exe).
3. On Windows 2008, you must opt to **Allow the program to run**.
4. Select the **Complete** installation.
5. Click **Install** to run the installation program. (This could take several minutes.)
6. Enter the password that will be used for the administrator accounts of the cloud server, Apache Tomcat, and PostgreSQL. (If a PostgreSQL user already exists on the host, use the existing PostgreSQL password.)

Note: The setup program creates administrator accounts for GO-Global Cloud, Apache Tomcat and PostgreSQL. The user name for both the GO-Global Cloud and Apache Tomcat administrator accounts, is *admin*. The PostgreSQL administrator account is a Windows account, and the user name is *postgres*. The password for all of these accounts is the password entered above.

7. Click **Next**.
8. If you want users to be able to sign in to the cloud server using their Active Directory accounts and credentials, configure the cloud server to use LDAP. See *Configuring the Cloud Server for LDAP Authentication* in the Chapter 3 of the GO-Global Cloud Administrator Guide.
9. Restart the machine.

No license is required to access and sign in to a cloud server, but an additional cloud server license is required to sign in to a host from a cloud server. Cloud server licenses may be obtained using the host's **License Retrieval Wizard**, as described in the next section.

2 INSTALL THE HOST

The host may be installed on the same computer as the cloud server, or on a separate computer. The host setup program must be run by an administrator.

To install the Host

1. Run the host setup program (gg-host.windows_x86.exe or gg-host.windows_x64.exe).
2. Accept the terms in the license agreement and click **Next**.
3. Click **Install**.
4. If a message appears cautioning that the GO-Global Display Driver has not passed Windows Logo testing, it is safe to ignore. Click **Continue Anyway**.
5. The setup includes a **License Retrieval Wizard** which will automatically retrieve and install a license for GO-Global if there is no existing license. If you already have a valid GO-Global license, the License Retrieval Wizard will not launch. You will need the Product Code supplied by your GraphOn sales representative in order to complete the License Setup. If you do not have a Product Code and wish to obtain a temporary demo license, type demo in the **Product Code** box. The License Retrieval Wizard will copy the license to the Programs directory.
6. When installation is complete, click **Finish**.
7. Restart the machine.

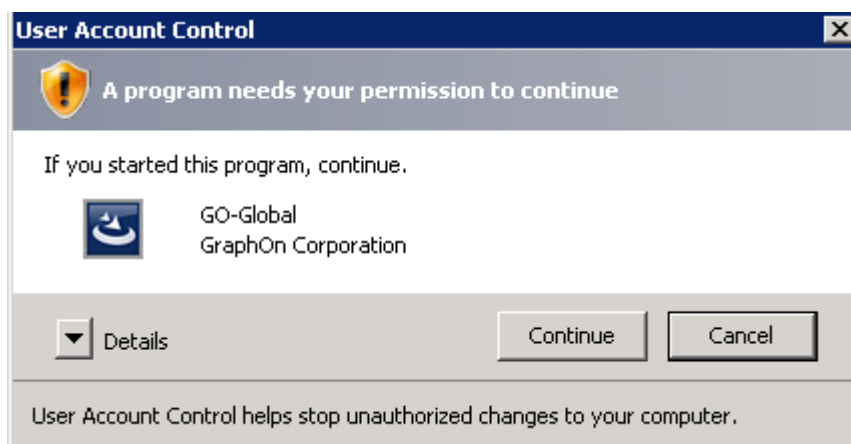
Note: When a user signs in to a host from a cloud server, the host checks out both a host license and a cloud server license. Demo license files include both of these licenses. You can obtain these licenses at any time after installation by clicking [Start | Programs | GraphOn GO-Global 4 | Tools | License Retrieval Wizard](#).

3 CONNECT THE HOST TO THE CLOUD SERVER

To access a host from GO-Global Cloud, the host must be connected to a cloud server.

To connect the host to the cloud server

1. Install the **Cloud Connector** on the host by running the **gg-cloud-client.windows.exe** setup program. In addition to the Cloud Connector, this setup installs the GO-Global Cloud client, ActiveX Control, Firefox Plug-in and Adobe AIR.
2. Right-click [Start | All Programs | GraphOn GO-Global 4 | Tools | Cloud Connector](#).
3. Click **Run as administrator**.
4. If the following dialog is displayed, click **Continue**.



5. Type the network address (e.g., wilson.graphon.com) of the cloud server you are connecting to in the **Address** box.
6. Click **Connect**.
7. In the **Sign in** dialog, type the user name of the cloud server administrator (e.g., admin) and the password you specified when you installed the cloud server. Click **Sign In**.
8. In the **Name Your Computer** dialog, type a name for the computer (e.g., Bob's work laptop) in the **Name** box. This name is displayed in GO-Global Cloud. Type the computer's hostname (e.g., wilson.graphon.com) in the **Address** box. The full domain address is required when the cloud server and host are on different domains.
9. Click **Ok**. An icon for the host will appear in the window. Initially, the icon is gray, indicating that the host is offline. Within about 30 seconds, the icon will turn blue, indicating that it is now online and can be accessed from GO-Global Cloud.

4 PUBLISH APPLICATIONS

Applications can be published to users and groups.

To publish applications to specific users and groups

1. If you are still running the Cloud Connector, double-click the host. If you have closed the Cloud Connector, first run GO-Global Cloud and sign in to the cloud server as the administrator:
 - a. Click Start | All Programs | GraphOn GO-Global 4 | GO-Global Cloud.
 - b. Type the network address of the cloud server in the **Address** box. Click **Connect**.
 - c. Click **Sign in** on the toolbar.
 - d. In the **Sign in** dialog, type the user name and password of the cloud server administrator. Click **Sign in**.
 - e. Double-click the host.
2. Sign in to the host as Administrator.

Note: *On Windows XP and Windows Server 2003, you can administer a host from any account that is a member of the computer's Administrators group. On Windows Vista and later, however, when User Access Control is enabled, you should administer hosts from the computer's Administrator account. Otherwise, you will be unable to perform some operations (e.g., edit the properties of users' workspaces).*

3. Click the **Toggle navigation pane** button on the toolbar.
4. Select **Workspaces** in the tree view.
5. Select **Public** (Windows Vista and later) or **All Users** (Windows Server 2003 and earlier).
6. If there is no shortcut to the application you want to publish, create one:
 - a. Click the **Add (+)** button on the toolbar.
 - b. In the **Create New Shortcut** dialog, type a name for the shortcut.
 - c. Click the **Browse** button to browse for the desired file or program.
 - d. Click **Select**.
 - e. Click **Create**.
7. Drag an application shortcut from the main window and drop it on the **Home** folder in the **Navigation Pane**.
8. Click the **Edit Properties** button on the toolbar.
9. Click the **Security** tab.
10. In the **Search Users...** field, type the name of a user or group.

11. Click **Search**.
12. Select a user or group from the list on the left (e.g., Guest).
13. Click **Add** or drag the user or group from the list on the left to the list on the right.
14. Click **Save**.

When the user (or member of the specified group) signs in to the cloud server, a link to the published application will be displayed in the main window.

5 GRANT ACCESS TO THE HOST

If users need to access other resources on the host besides published applications, or if they need to be able to manage their own settings, you can grant them the right to sign in to the host. If, however, users only need to access applications that are published from the host, you can skip this step.

To grant specific users and groups the right to sign in to the host

1. If you have closed the Cloud Connector, run GO-Global Cloud and sign in to the cloud server as the administrator.
2. Double-click the host.
3. Sign in to the host as Administrator.
4. Click **Toggle navigation pane**.
5. Select the host in the tree view.
6. Click the **Edit Properties** button on the toolbar.
7. Click the **Security** tab.
8. In the **Search Users...** field, type the name of a user or group, e.g. Guest.
9. Click **Search**.
10. Select a user or group from the list on the left.
11. Click **Add** or drag the user or group from the list on the left to the list on the right.
12. Click **Save**.

When the user (or member or the specified group) connects to the cloud server, the host will be displayed in the main window.

6 GRANT ACCESS TO WORKSPACES

In addition to controlling which users are allowed to access a host, the cloud server controls which workspaces (Windows User Profiles) a user is allowed to access. By default, GO-Global Cloud automatically grants the first user to sign in to a workspace the right to access the workspace. Thereafter, if any other user tries to sign in to the workspace, access will be denied unless a host administrator has explicitly granted the user access to the workspace.

For example, if you sign in to the cloud server as *admin*, and then sign in to the host as *Administrator*, GO-Global will automatically grant the *admin* cloud server user access to the host's *Administrator* workspace. Thereafter, however, if other cloud server users (e.g., Guest) try to sign in to the host as *Administrator*, the cloud server will deny the user access to the workspace.

To grant users access to a workspace

1. Sign in to the cloud server as *admin*.
2. Sign in to the host as *Administrator*.
3. Click the **Toggle navigation pane** button on the toolbar.
4. Select **Workspaces** in the tree view.
5. Select the workspace you want to edit.
6. Click the **Edit Properties** button on the toolbar.
7. Click the **Security** tab.
8. In the **Search Users...** field, type *Guest*.
9. Click **Search**.
10. Select the *Guest* user from the list on the left.
11. Click **Add**.
12. Click **Save**.

Note: If the cloud server is configured to authenticate users using accounts defined within the cloud server's database (the default configuration), administrators can disable GO-Global Cloud's additional level of access control by publishing applications to the *Guest* user. When this is done, users will not be prompted to sign in to GO-Global Cloud. They will be prompted to sign in to the host, but only the first time they start an application within their session.

7 RUN GO-GLOBAL CLOUD

Users run GO-Global Cloud from the Windows Start menu or from Windows computers via supported browsers that have Adobe Flash installed.

To run GO-Global Cloud from the Windows Start menu

1. Install the client using the **gg-cloud-client.windows.exe** setup program. This setup program installs the GO-Global Cloud client, ActiveX Control, Firefox Plug-in and Adobe AIR.
2. From the Start menu, click **Start | Programs | GraphOn GO-Global 4 | GO-Global Cloud**.
3. In the **Connection** dialog, type the name of the cloud server into the **Address** box.
4. Click **Connect**.
5. If the cloud server is configured to use LDAP authentication, type the user name and password of an account in the directory.
6. Double-click an application icon.
7. If the cloud server is not configured to use single sign-on, you may be prompted to sign in again. If so, type the user name and password of a host account and click **Sign in**.

To run GO-Global Cloud from a browser

1. If it is not already installed, install the Adobe Flash Player.
2. In the Web browser's address field, type the address of the cloud server.
(For example, <http://forum.burlingtonx.com:8080/go-global>)
3. Optionally, click the **Install GO-Global Add-on** link located on the right side of GO-Global Cloud's title bar. The GO-Global Add-on boosts performance, allows applications to run outside of the browser's windows, and provides access to local printers and drives. (A browser restart is required.)
4. If the cloud server is configured to use LDAP authentication, type the user name and password of an

account in the directory.

5. Double-click an application icon.
6. If the cloud server is not configured to use single sign-on, you may be prompted to sign in again. If so, type the user name and password of a host account and click **Sign in**.

After signing in to the host, the application will start.

Note: If the GO-Global Add-on is not installed, applications launched from GO-Global Cloud appear embedded in a separate browser window.

GRAPHON CORPORATION

Headquarters: 5400 Soquel Ave., A-2, Santa Cruz, CA, 95062 USA

Phone: 1.800.GRAPHON or 603.225.3525

Fax: 831.475.3017 • Email: support@graphon.com

European Office: United Kingdom

Phone: +44.1344.206549 • Fax: + 44.1344.206855

<http://www.graphon.com>

© 2012 GraphOn Corporation. All rights reserved.

GraphOn and GO-Global are trademarks or registered trademarks of GraphOn Corp. Other trademarks belong to their respective owners.

This document, as well as the software described in it, is a proprietary product of GraphOn, protected by the copyright laws of the United States and international copyright treaties. Any reproduction of this publication in whole or in part is strictly prohibited without the written consent of GraphOn. Except as otherwise expressly provided, GraphOn grants no express or implied right under any GraphOn patents, copyrights, trademarks or other intellectual property rights. Information in this document is subject to change without notice.

Microsoft, Windows, Windows NT, Internet Explorer, and Terminal Server are trademarks of Microsoft Corporation in the United States and/or other countries. Adobe, Acrobat, AIR, Flash, and Reader are either registered trademarks or trademarks of Adobe Systems Incorporated in the United States and/or other countries. Firefox is a registered trademark of the Mozilla Foundation. Mac, Mac OS, and Safari are trademarks of Apple Inc., registered in the U.S. and other countries.

All other brand and product names are trademarks of their respective companies or organizations.